



MONTHLY MEMBERSHIP PROGRESS REPORT

District 324A1

Results as of: 07/31/2018

GMT: N S SANKAR

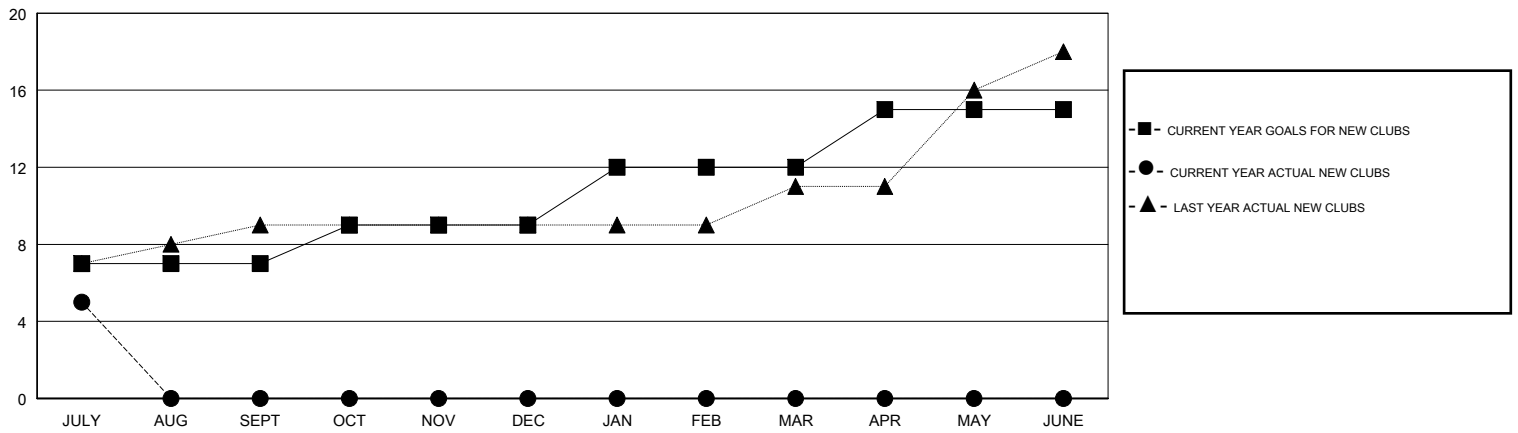
LOCATION INDIA

GMT CA

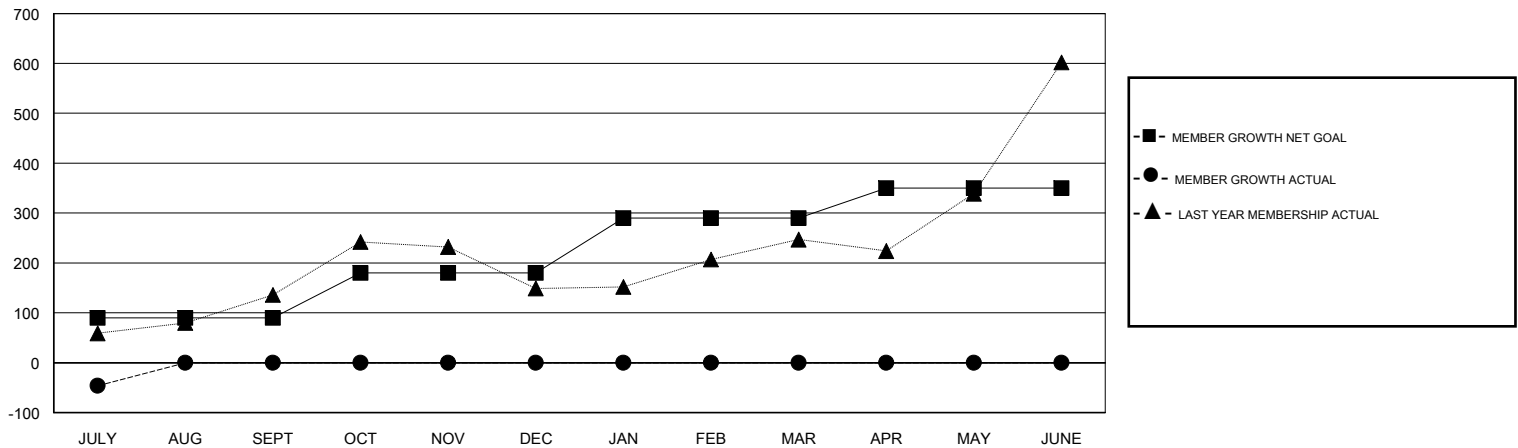
Clubs			
RESULTS FOR 2018-2019			
QUARTER	NEW CLUB GOAL	NEW CLUBS	DROPPED CLUBS
JULY/AUG/SEPT	7	5	0
OCT/NOV/DEC	2	0	0
JAN/FEB/MAR	3	0	0
APR/MAY/JUNE	3	0	0

Members			
RESULTS FOR 2018-2019			
QUARTER	MEMBER GROWTH NET GOAL	MEMBER GROWTH ACTUAL	DROPPED MEMBERS ACTUAL (including transfers)
JULY/AUG/SEPT	90	205	244
OCT/NOV/DEC	90	0	0
JAN/FEB/MAR	110	0	0
APR/MAY/JUNE	60	0	0

GOALS AND ACTUAL NEW CLUBS CUMULATIVE



GOALS AND ACTUAL MEMBERS CUMULATIVE



DROPPED CLUBS: 0	36 CLUBS OF 178 ADDED 1 OR MORE NEW MEMBERS	<u>GENDER DISTRIBUTION</u>	
DROPPED MEMBERS		MALE	4,353 (74.45%)
DECEASED	1	FEMALE	1,494 (25.55%)
CLUB CANCELLED	0	Women Percentage Fiscal Year Goal: 20%	
OTHER	243	TOTAL FAMILY UNIT MEMBERS	
TOTAL	244	1,710	
CLICK HERE FOR CUMULATIVE MEMBERSHIP DATA		FAMILY MEMBERS PAYING HALF DUES	
		914	